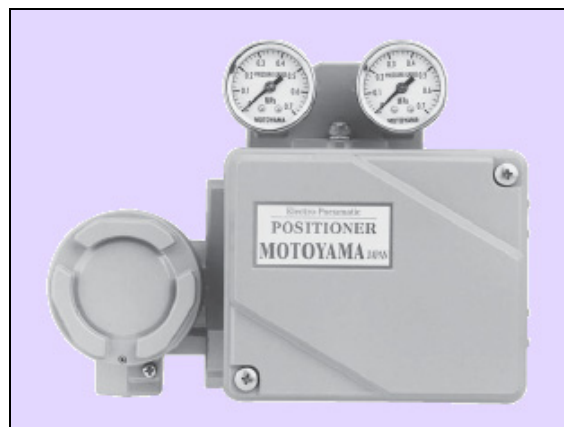


Model EA91A Flameproof Type Explosion-protected Construction
Model EA90A Intrinsic Safety Type Explosion-protected Construction
ELECTRO-PNEUMATIC VALVE POSITIONER

The Models EA91A/EA90A electro-pneumatic valve positioners are mounted to control valve as accessories. This device converts electric signals transmitted from controller into pneumatic pressure to control the valve opening position precisely.

- Model EA91A : This is an explosion-protection certified product which is available to use for flammable and explosive gas atmospheres including Hydrogen.
- Model EA90A : This is available to use for intrinsic safety type of explosion-protection in combination with safety barriers.



1. FEATURES

1. Certified Explosion-Protection in accordance with the New Recommend practice

[Complied with the new technical standard (IEC matching standard) test]

- Model EA91A : "Ex sd II C T6X" flameproof type.
- Model EA90A : "Ex ia II C T5" intrinsic safety type.

2. Economical and Highly Reliable

- These products are interchangeable with the former products EA91/EA90 ; No additional parts or works required.
- The consumable parts (e.g. pilot) required are also compatible with the former products.
- Measures against vibration and impact are highly improved on reducing the weight by 20%.
- Applicable to a wide range of actuator size and maintains very stable/reliable performance.
- Achieved Protection is IEC class IP65. IP66 is available as option.

3. Wide Function

- Applicable to a single acting rotary valve by using cam.
- Includes manual changeover system that allows manual switching operation.
- The design provides conformity to a control valve.

4. Easy Maintenance

- Allows easier overhaul by adopting a unit construction. (Construction is the same as EA91/EA90).
- All external bolts and nuts are made of stainless steel which provides superior corrosion resistance and workability.
- Pilot valve assembly is the same one as those of EA91/EA90 and has sufficient experience of field-proven and reliable function.

2. STANDARD SPECIFICATION

Type		Model EA91A	Model EA91AC	Model EA90A	Model EA90AC
		Lever Type (Single Action)	Cam Type (Single Action)	Lever Type (Single Action)	Cam Type (Single Action)
Input Current		4 to 20mA DC			
Input Resistance		250Ω			
Supply Air Pressure		MAX. 500kPaG (5.0kgf/cm ² G)			
Structure	Explosion protection	Flameproof Type		Intrinsic Safety Type	
		(JIS)	Ex sd II C T6X	(JIS)	Ex ia II C T5
		(NEPSI)	Ex dmb II C T6 Gb	(NEPSI)	Ex is II C T5 Ga
		(KOSHA)	Ex dmb II C T6		
	Protection Class	IEC IP65 (※ IEC IP66)			
Connection	Air Piping Connection	Rc1/4 (PT1/4)			
	Conduit Connection	G1/2			
Characteristics	Output Characteristics	Linear			
	Standard Stroke	10 to 65mm (※ over 65 to 130mm)	60° (Linear) (※ 60°Eq%, 90°Linear)	10 to 65mm (※ over 65 to 130mm)	60° (Linear) (※ 60°Eq%, 90°Linear)
	Linearity	≒ ±1.0% F.S.	≒ ±2.0% F.S.	≒ ±1.0% F.S.	≒ ±2.0% F.S.
	Hysteresis Error	≒ 1.0% F.S.	≒ 1.5% F.S.	≒ 1.0% F.S.	≒ 1.5% F.S.
	Dead band (substance alone)	≒ 0.1% F.S.	≒ 0.3% F.S.	≒ 0.1% F.S.	≒ 0.3% F.S.
	Repeatability	≒ 0.3% F.S.			
	Air Consumption	≒ 6.0ℓ/min Nor (SUP. 140kPaG (1.4kgf/cm ² G) , Signal 50%)			
	Max. Supply and Exhaust of air	70ℓ/min Nor (SUP. 140kPaG (1.4kgf/cm ² G) , Signal 50%)			
	Insulation Resistance	≧ 100MΩ (with 500VDC Mega between terminal and case)			
	Ambient Temp.	-40℃ to +100℃ (-20℃ to +60℃ for Explosion protection)		- 20℃ to +60℃	
Painting Color		Munsell 2.5PB 5/8 (Blue)			
Weight		Approx. 2.9 kg			

- 【Notes】 (1) ※Available as options on customer's request.
 (2) Model EA90A/EA90AC positioner is not available for reverse action type pilot.

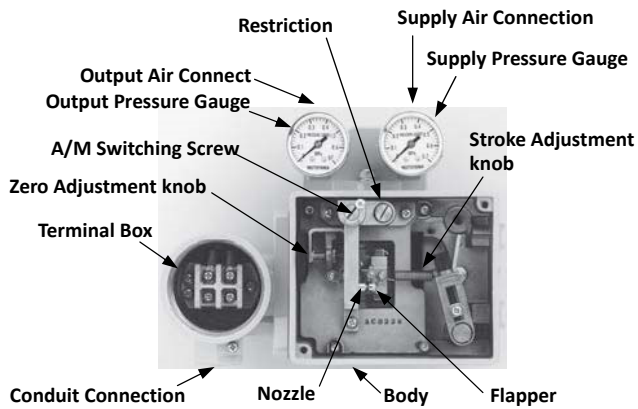
3. MODEL NUMBERING SYSTEM

Specifications		Basic Model No.	Specification Code	
Structure	Flameproof Type	EA91A		
	Intrinsic safety Type	EA90A		
Displacement transfer Method	Lever Type		(None)	
	Cam Type		C	
Method of Leading External Cable	Conduit Type (Standard)			(None)
	Explosion-proof connector with packing Type (option)			T

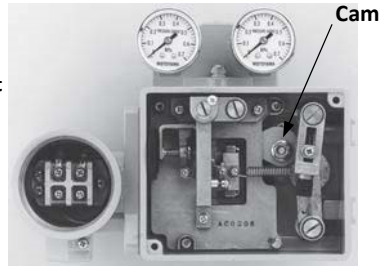
【Note】 If method of leading external cable is explosion-proof connector (Spec. code: T), applicable standard is JIS, flameproof. In case of NEPSI flameproof type, flameproof packing connector (cable glands), certified by NEPSI, shall be supplied by customer.

4. CONSTRUCTION

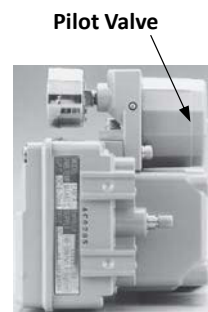
● Lever Type



● Cam Type



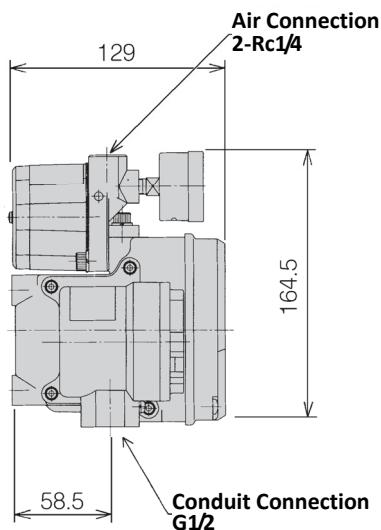
● Right lateral face



5. EXTERNAL DIMENSIONS

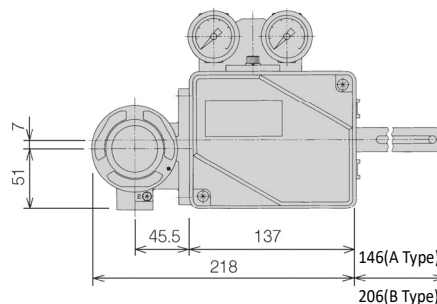
Unit: mm

● Left lateral face

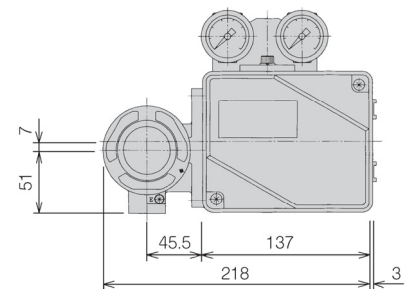


● Lever Type

Type	Actuator Size
A	$\phi 200 \sim \phi 330$
B	$\phi 400 \sim \phi 650$



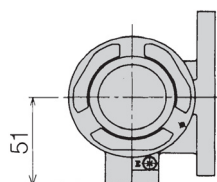
● Cam Type



Leading External Cable Gland

● Conduit Type (standard)

Model : EA91A(C)/ EA90A(C)

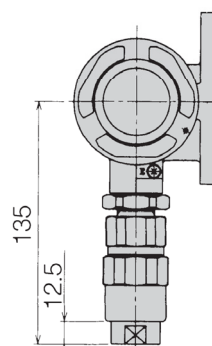


● Flameproof Packing Type (optional)

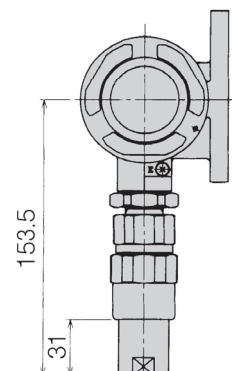
Applicable cable OD : $\phi 9.1 \sim \phi 11$

Model : EA91A(C) T

KXB-LO-16
(Standard)

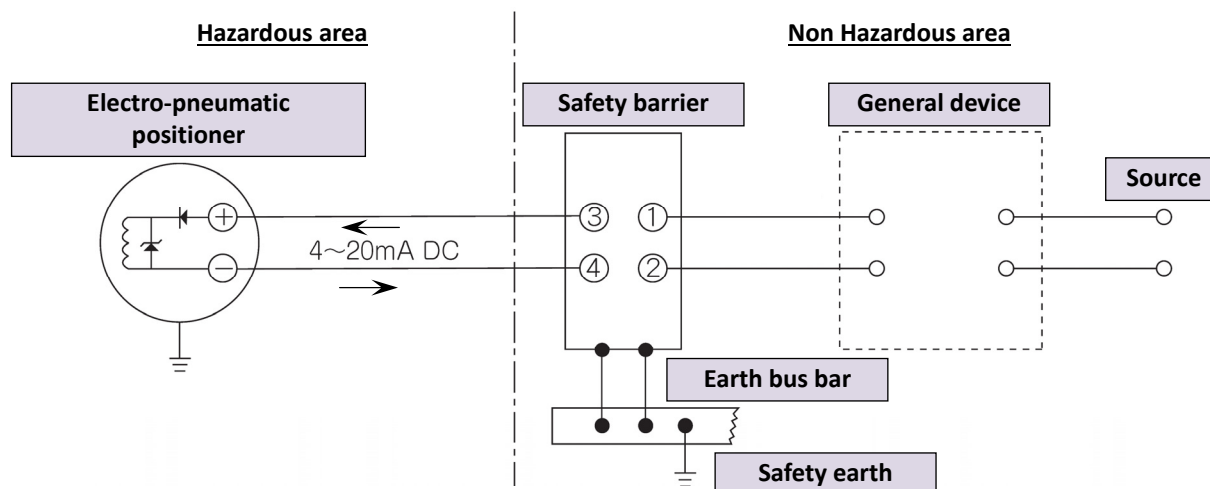


KXB-LO-16F
(Optional Spec.)



6. System construction

(EA90A Type intrinsically safety construction)



To combine with a safety barrier

The safety barrier which is used in combination with Electro-pneumatic positioner EA90A must be ※²TIIS certified type.

For the safety barrier selection, please refer to the following data for intrinsically safe approval of Model EA90A.

① Performance classification and Group

ia II C

② Permissible maximum values

$U_i = 30V$, $I_i = 100mA$, $P_i = 0.75W$

③ Parameters

C_i = negligibly small

L_i = negligibly small

※²TIIS ; Technology Institution of Industrial Safety (JAPAN)



Caution

※Motoyama distribute recommended safety barriers. If you are interested or have any questions about the product, please contact our sales offices or sales agents.



株式会社 本山製作所

MOTOYAMA ENG. WORKS, LTD.

http://www.motoyama-cp.co.jp

本 社 工 場 〒981-3697 宮城県黒川郡大衡村大衡字亀岡5-2 TEL(022)344-4511(代表) / FAX(022)344-4522
E-mail : info@motoyama-cp.co.jp

Main Office & Factory 5-2, Ohira Aza Kameoka, Ohira-mura, Kurokawa-gun, Miyagi, 981-3697, Japan
TEL +81-22-344-4511 / FAX +81-22-344-4522
E-mail : info-overseas@motoyama-cp.co.jp

●販売・サービスネットワーク

東 京 支 店	〒210-0007 神奈川県川崎市川崎区駅前本町 10-5 クリエ川崎 11F	TEL (044) 381-8770(代表)	FAX (044) 381-8772
大 阪 支 店	〒550-0014 大阪市西区北堀江 1 丁目 12-19 クリモビル 3F	TEL (06) 6535-8111(代表)	FAX (06) 6535-8655
国 際 営 業 部	〒210-0007 神奈川県川崎市川崎区駅前本町 10-5 クリエ川崎 11F	TEL (044) 381-8771	FAX (044) 381-8773
札 幌 営 業 所	〒001-0912 札幌市北区新琴似 12条7丁目 1-47 リバティタウンP棟 101号	TEL (011) 766-1520	FAX (011) 766-1521
東 北 営 業 所 大 衡 サービスセンター	〒981-3697 宮城県黒川郡大衡村大衡字亀岡 5-2	TEL (022) 344-1761	FAX (022) 344-1762
上 越 営 業 所 上 越 サービスセンター	〒942-0036 新潟県上越市大字東中島 2393番地	TEL (025) 542-5151	FAX (025) 542-5152
関 東 営 業 所 千 葉 サービスセンター	〒290-0046 千葉県市原市岩崎西 1 丁目 5-19	TEL (0436) 21-4400	FAX (0436) 21-3540
静 岡 営 業 所	〒422-8033 静岡県駿河区登呂 4 丁目 28-5	TEL (054) 269-5377	FAX (054) 237-5855
名 古 屋 営 業 所 中 部 サービスセンター	〒481-0012 愛知県北名古屋市久地野安田 36番地	TEL (0568) 26-6681	FAX (0568) 26-6631
水 島 営 業 所	〒710-0042 岡山県倉敷市二日市 358	TEL (086) 486-3381	FAX (086) 486-3382
阪 神 サービスセンター	〒560-0894 大阪府豊中市勝部 2 丁目 18-3	TEL (06) 6854-7511	FAX (06) 6854-7512
姫 路 出 張 所	〒672-8014 兵庫県姫路市東山 276番地 1	TEL (079) 263-8640	FAX (079) 246-2130
徳 山 営 業 所 周 南 サービスセンター	〒745-0861 山口県周南市新地 1 丁目 6-11	TEL (0834) 21-5012	FAX (0834) 31-0450
四 国 営 業 所 新 居 浜 サービスセンター	〒792-0896 愛媛県新居浜市阿島 1 丁目 6-26	TEL (0897) 47-8993	FAX (0897) 47-8995
大 分 営 業 所 大 分 サービスセンター	〒870-0141 大分県大分市三川新町 1 丁目 3-23	TEL (097) 576-7032	FAX (097) 576-7033

●海外関連会社

本山閥門(大連)有限公司 〒116601 中国 遼寧省大連市金州新区港興大街 39 号 14-7 TEL +86-411-6589-1277 FAX +86-411-6589-1278

●海外販売代理店

中国、韓国、台湾、シンガポール、インドネシア、マレーシア、サウジアラビア

●SALES AND SUPPORT NETWORK

Overseas Marketing & Sales Dept. : 11th Floor, Clie Kawasaki, 10-5, Ekimae-honcho, Kawasaki-ku, Kawasaki-city, Kanagawa, 210-0007 Japan

TEL: +81-44-381-8771 FAX : +81-44-381-8773

Domestic Sales Branches : Tokyo, Osaka, Sapporo, Tohoku, Joetsu, Kanto, Shizuoka, Nagoya, Hanshin, Tokuyama, Shikoku, Oita

●OVERSEAS AFFILIATED COMPANY

MOTOYAMA VALVE (DALIAN) CO., LTD

Gangxing Street 39-14-7, Jinzhou New District, Dalian-city, 116601 China

TEL: +86-411-6589-1277

FAX: +86-411-6589-1278

●OVERSEAS NETWORK

China, Korea, Taiwan, Singapore, Indonesia, Malaysia, Saudi Arabia

◆当社は保証期間を原則として製品納入後 1 年としています。

◆The product will be warranted for one year after delivering this product in principle.

■本カタログの記載内容は、商品の改良等のため予告なく変更することがありますので予めご了承下さい。

■MOTOYAMA is continuously improving and upgrading its product design, specifications and/or dimensions. Information included herein is subject to change without notice.

■本カタログは正しい情報の提供を目的としたものであり、本製品の市場性または適合性の保証を証明するものではありません。

■This catalog is supplied for information purpose only and should not be considered certified marketability and conformability of this product.